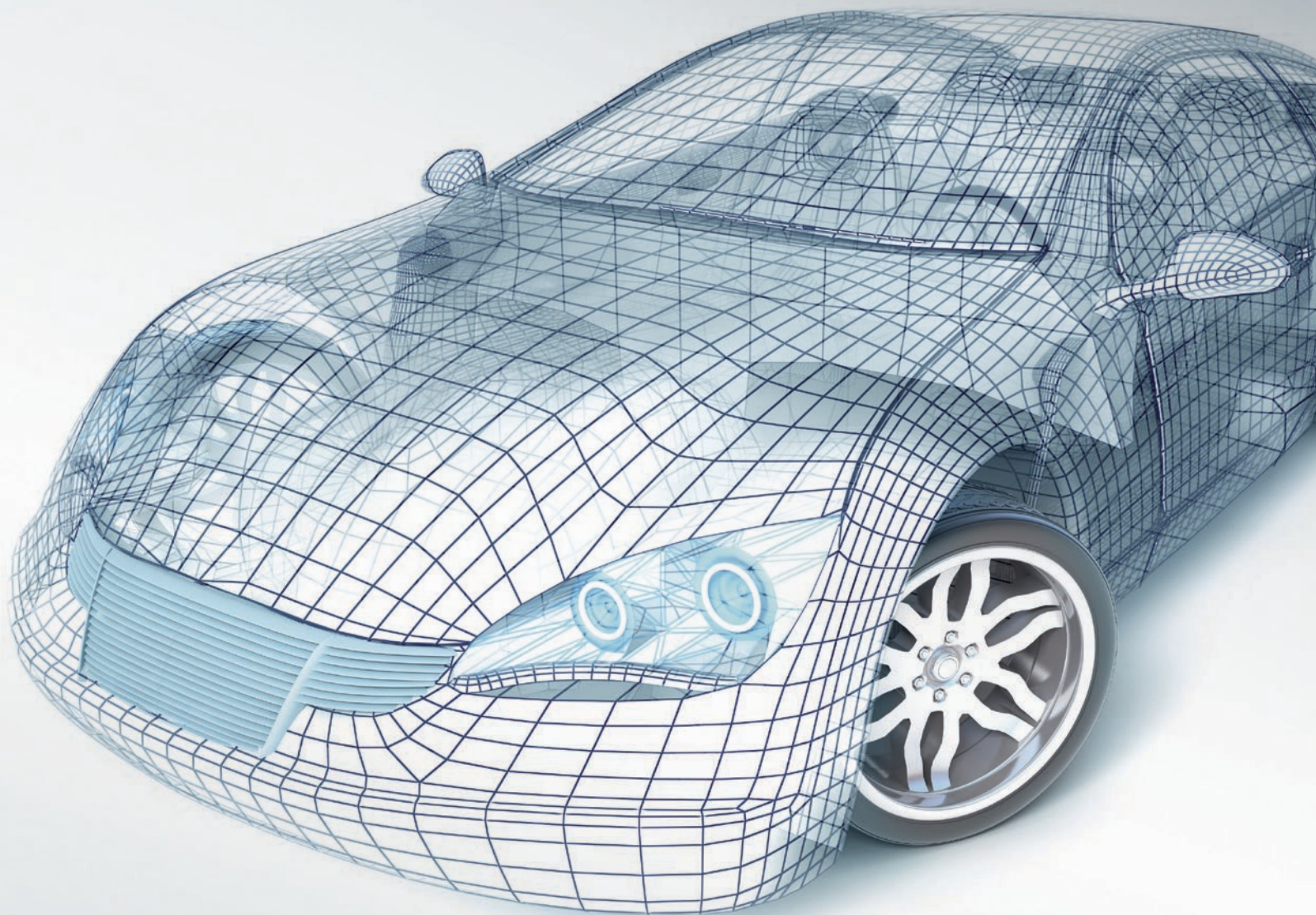


# AUTOMOTIVE PORTFOLIO

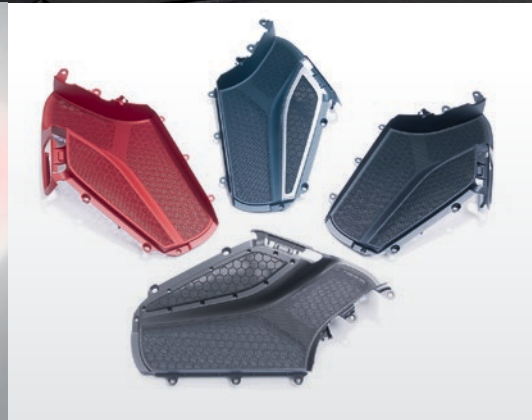
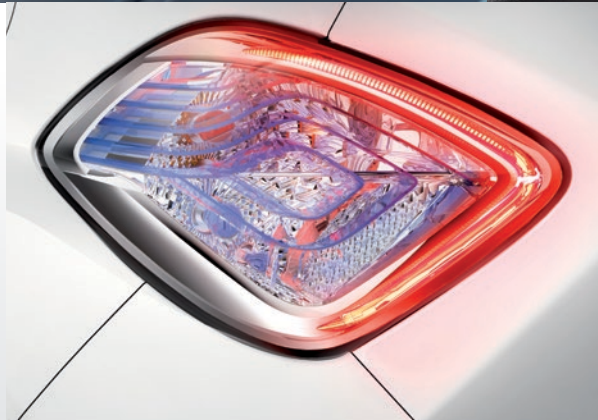
FOR EXTERIOR AND INTERIOR APPLICATIONS



**INEOS**  
**STYROLUTION**

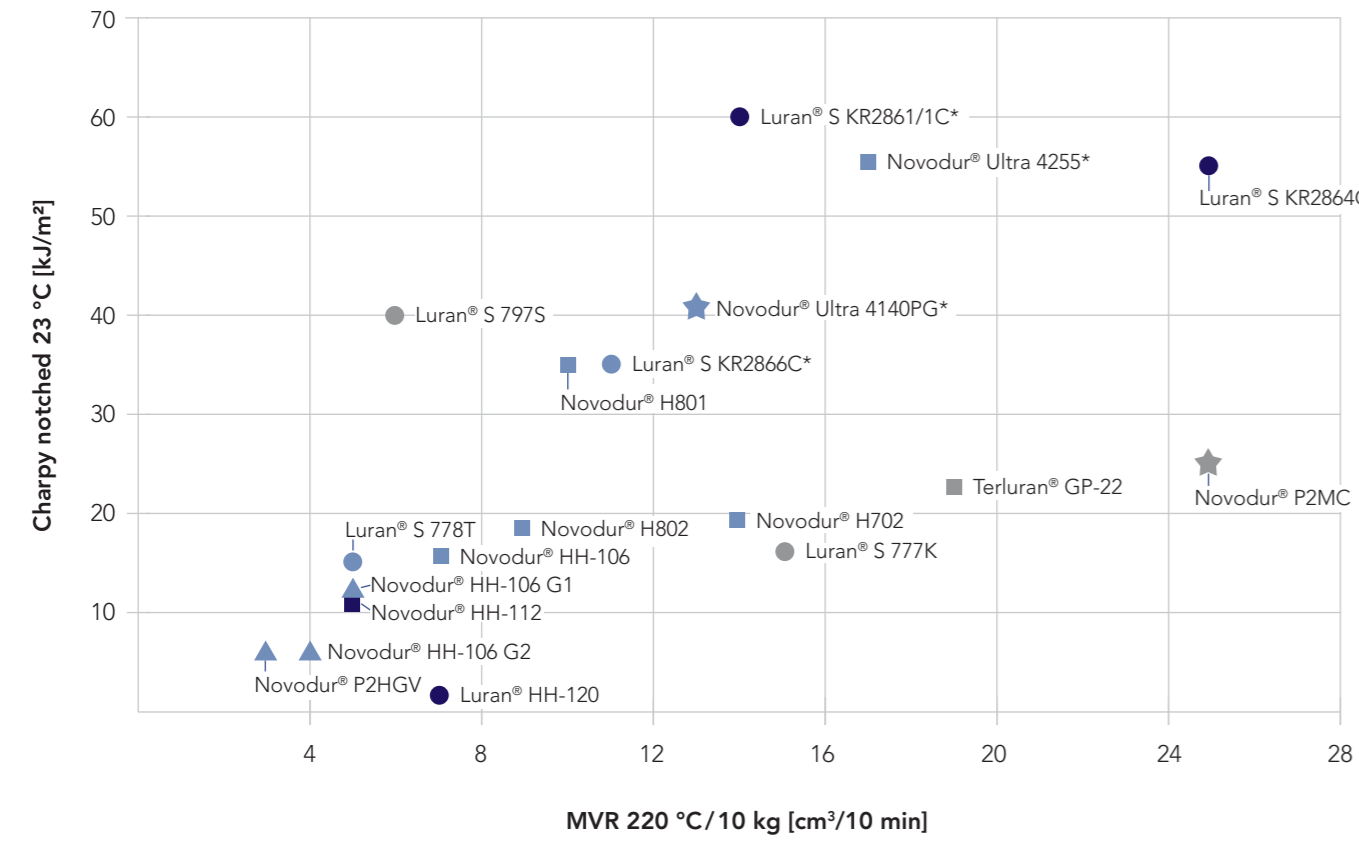
Driving Success. Together.

# DISCOVER THE VERSATILITY OF AUTOMOTIVE APPLICATIONS



# EXTERIOR

DESIGN WITH EXCELLENT WEATHERABILITY AND HIGH SURFACE QUALITY



Heat resistance Vicat VST/B/50: ■ 110 – 120 °C ■ 100 – 110 °C ■ 90 – 100 °C ○ Unpainted □ Painted ☆ Electroplating ▲ Reinforced  
\*260 °C/5 kg

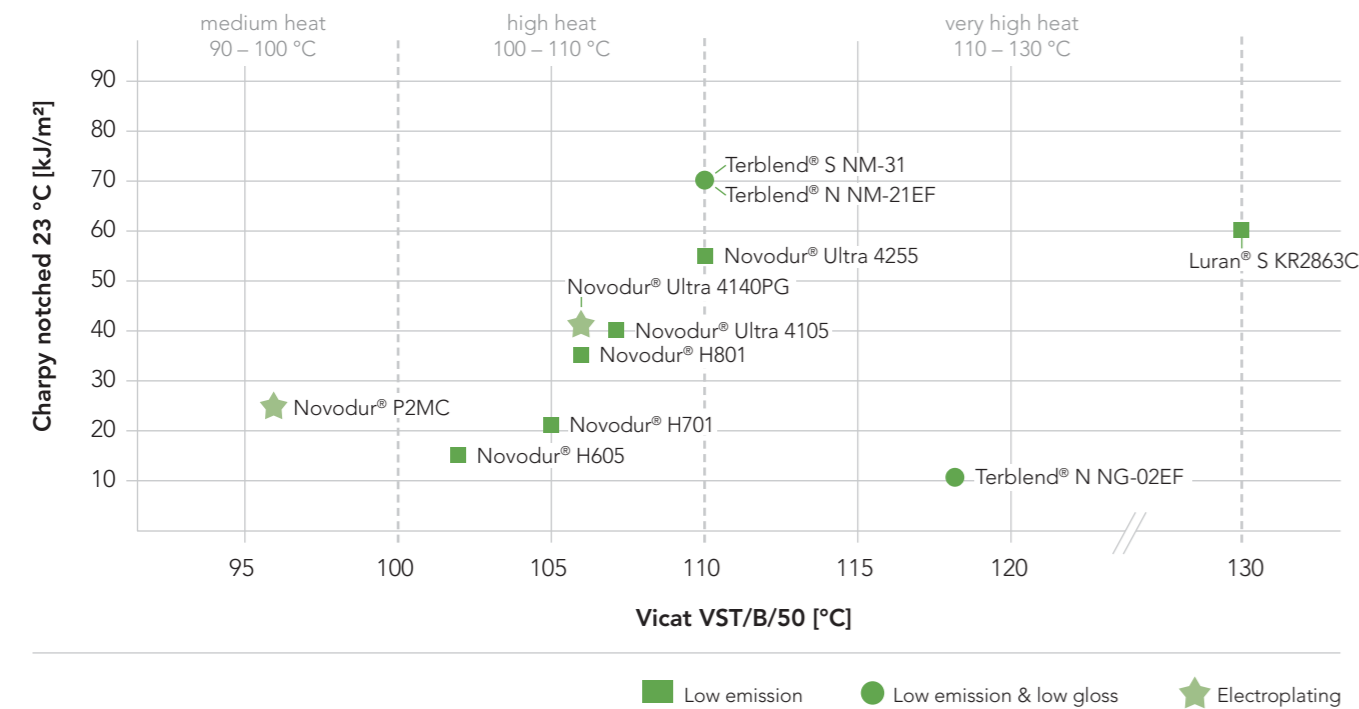
KEY GRADES

Key products	Type	Properties					Applications							
		MVR 220 °C / 10 kg [cm³/10 min]	Charpy notched 23 °C [kJ/m²]	Charpy notched -30 °C [kJ/m²]	Tensile modulus [MPa]	Vicat VST/B/50 [°C]	Light housings	Rear view mirrors	Radiator grills (front & bumper)	Electroplated trims, frames & emblems	Exterior pillars	Spoilers	Exterior trims	Mounting brackets
Luran® S 7975	High Impact ASA	6	40	9	2000	90								
Luran® S 777K	High flow ASA (global!)	15	17	4	2300	97	■	■	■			■		■
Luran® S 778T	High heat ASA (global!)	5	15	4	2500	104	■	■	■		■		■	■
Luran® S KR2866C	ASA/PC	11*	35	9	2600	110			■			■		■
Luran® S KR2861/1C	PC/ASA	14*	60	20	2300	120			■			■		■
Luran® S KR2864C	High flow PC/ASA	25*	55	11	2600	120	■		■		■	■		■
Luran® HH-120	High heat SAN	7	2	2	3900	120	■	■			■			■
Terluran® GP-22	General purpose ABS (global!)	19	22	8	2300	96		■	■					
Novodur® HH-106	High heat ABS (global!)	7	16	7	2400	106	■	■	■		■	■		■
Novodur® H702	High heat high flow ABS	14	19	9	2500	104		■	■		■	■		
Novodur® HH-112	Very high heat ABS (global!)	5	11	6	2700	111	■					■		
Novodur® H801	High impact ABS	10	35	14	2400	106	■				■			■
Novodur® H802	Very high heat ABS	9	18	8	2700	108	■							
Novodur® Ultra 4255	Very high impact ABS/PC	17*	55	55	2100	110	■	■	■		■		■	
Novodur® P2MC	High flow platable ABS	25	25	16	2200	96				■				
Novodur® Ultra 4140PG	High impact & Heat platable ABS/PC	13*	41	33	2100	106				■				
Novodur® HH-106 G1	4% GF High Heat ABS	5	12	6	3000	107					■			
Novodur® HH-106 G2	8% GF High Heat ABS	4	6	4	3600	107					■			
Novodur® P2HGV	16% GF ABS	3	6	5	5500	105					■			

\* Production in three regions \*\* 260 °C/5 kg

# INTERIOR

COMFORT WITH HIGH SAFETY, LOW EMISSION AND TRENDY APPEARANCE



■ Low emission ● Low emission & low gloss ☆ Electroplating

KEY GRADES

Key products	Type	Properties					Applications											
		MVR 220 °C / 10 kg [cm³/10 min]	Charpy notched 23 °C [kJ/m²]	Charpy notched -30 °C [kJ/m²]	Tensile modulus [MPa]	Vicat VST/B/50 [°C]	Door panels	Door grab handles	Roof consoles	Pillars	Steering columns	Instrument clusters	Glove boxes	IP consoles	Air ventings	Loudspeakers	Seat trims	Center consoles
Novodur® H605	Medium heat enhanced flow ABS	26	15	7	2400	102				■								■
Novodur® H701	High heat ABS	8	22	12	2100	105	■	■		■								■
Novodur® H801	High impact ABS	10	35	14	2400	106	■	■		■	■		■					■
Novodur® Ultra 4105	High impact ABS/PC	14*	40	32	2000	107	■	■		■	■		■					■
Novodur® Ultra 4255	Very high impact ABS/PC	17*	55	55	2100	110	■	■	■	■	■		■	■				■
Luran® S KR2863C	Very high heat ASA/PC	18*	60	17	2500	130			■									
Terblend® S NM-31	High flow & low gloss	60**	70	9	2100	110								■		■		■
Terblend® N NM-21EF	High flow & low gloss	60**	70	12	2100	110								■		■		■
Terblend® N NG-02EF	High flow & high modulus ABS/PA/GF	40**	11	6	3100	118			■				■	■				
Novodur® P2MC	High flow platable ABS	25	25	16	2200	96												■
Novodur® Ultra 4140PG	High impact & Heat platable ABS/PC	13*	41	33	2100	106		■		■	■		■	■				■

\* 260 °C/5 kg \*\* 240 °C/10 kg

---

**INEOS Styrolution Group GmbH**

Global Headquarters  
Mainzer Landstraße 50  
60325 Frankfurt am Main, Germany  
[ineos-styrolution.com](http://ineos-styrolution.com)

**Infopoint EMEA**

[INSTY.info@ineos.com](mailto:INSTY.info@ineos.com)  
+49 (0) 2133 9309 168

**PLEASE NOTE**

The data contained in this publication are based on our current knowledge and experience. In view of the many factors that may affect processing and application of our products, these data do not relieve processors from carrying out own investigations and tests; neither do these data imply any guarantee of certain properties, nor the suitability of the product for a specific purpose. Any descriptions, drawings, photographs, data, proportions, weights etc. given herein may change without prior information and do not constitute the agreed contractual quality of the product. It is the responsibility of the recipient of our products to ensure that any proprietary rights and existing laws and legislation are observed. (March 2019)